



Mail Ballot Verifier[®]

Inbound Mail Ballot Processor

Input Tray

Envelopes are fed into the system, where they are automatically endorsed, scanned and logged at a rate of 100 pieces per minute.

Endorsement Printing

Every envelope is automatically time and date stamped to provide proof of receipt and processing.

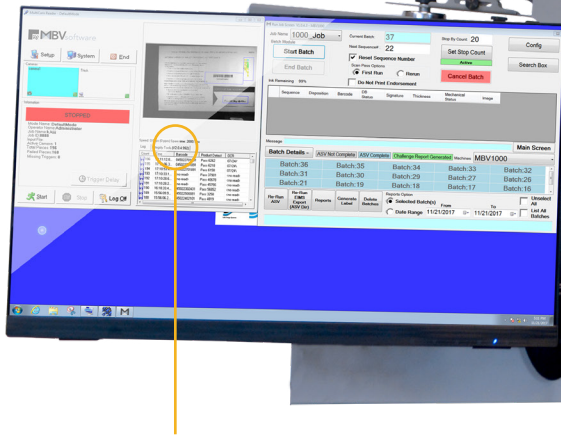


Image Capture

The MBV captures and stores an image of every envelope to provide quick and easy proof of processing. The voter signature is extracted from that image, enabling the use of our advanced signature verification technology.

Exceptions Bin

MBV automatically diverts envelopes based on user-defined exceptions, such as thickness or voter status. This creates a quick, accurate and efficient method to identify and review potentially invalid pieces.



AUTOMATED SIGNATURE RECOGNITION (ASR):

Industry-proven software is used to automatically compare the voter signature captured from the envelope against the signature on file. Users set a confidence threshold and any signature matching that criteria is automatically flagged as verified, eliminating the need for a manual review.

MBV Solution

More and more, voters are using the mail to cast their ballots. While this is a convenient option for voters, processing and verifying mailed ballots can be time consuming and labor intensive for election officials. With the Mail Ballot Verifier (MBV), verifying and sorting mailed ballots can be fully automated. This reduces costs and labor involved in completing this time-sensitive function.

EFFICIENT AND SECURE



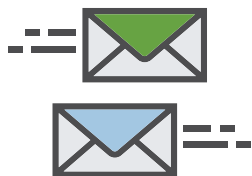
All envelopes are imaged and serialized by the MBV. This eliminates the need to handle voted ballots to verify them, and allows for more efficient and secure signature verification and better use of employee time.

ON-SCREEN, SIDE-BY-SIDE COMPARISON



The MBV provides an on-screen comparison of unverified signatures by displaying both the voter's and reference signatures side-by-side on a screen. The user simply accepts or rejects the envelope with a couple clicks of their mouse. This process is 5-10 times faster than the traditional method of manually scanning envelopes. ES&S can provide this on-screen viewing capability, or the MBV can exchange data with a jurisdiction's existing voter registration system, if that functionality is already offered.

IN-LINE SORTING



Sort bins can be added to the MBV 1000, allowing users to automatically separate and sort mail based on a variety of criteria such as geography (precinct, district, ward, etc.), voter status and exception types (no signature, invalid, too thick, etc.). This eliminates manual sorting and ensures only valid envelopes are made available for verification.

COMPACT AND COST EFFECTIVE



Unlike other systems on the market, the MBV is compact, quiet and easy to use, making it an ideal solution for the office environments operated by election staff. Additionally, the price of the MBV is significantly less than any other solution on the market — making it cost effective even for jurisdictions processing as few as 10,000 mail ballots.